

Guarantee-Registration form

First Name:

Last Name:

Address:

City:

State: Zip:

Phone:

Fax:

E-mail address:

Date of Purchase:

Model:

Serial Number:

Name of Supplier:
Please complete, copy and fax form back to us at ++41 (0) 41-8 33 88 98

Späni Zentrale Haustechnik AG · Bahnhofstr. 32 (Zeughaus) · 6422 STEINEN
Tel.: ++41 (0) 41-8 33 88 99 · E-Mail: info@zentralstaubsauger.ch · www.zentralstaubsauger.ch



OPERATING AND INSTALLATION INSTRUCTIONS

Dear Valid Customer,

We would like to congratulate you on your purchase of your new central vacuum system. You have chosen a high quality product "Made in Switzerland".

Easy operation, whisper quiet, and hygienic cleanliness are convincing arguments for this central vacuum system.

Modern production facilities in Switzerland, selected materials and examined quality are the basis for the 5 year-guarantee (from original purchase date).

Enjoy your new ProfiVac central vacuum system!

**Inspection Certificate:**

electrosuisse >>



The central vacuum cleaner must be installed in a dry and well-ventilated room. You need a power outlet within range (max. 1 m) of the unit.

For the **suction side** of the pipe installation please use pipes of 2 inch diameter. We recommend that you glue the pipe system. We do not recommend the use of 50 mm HT pipe because it is not possible to properly seal the pipe system. It is also not recommended to install pipe with a smaller diameter (e.g. 40 mm HT pipe) or a larger diameter (> 50.8 mm). Such cases will void the guarantee in case of damage.

For the **extracted air side** of the pipe installation please use the following dimensions:

Exhaust pipe: length up to 3 m use 2 inch adhesive pipe (Ø 50 mm)

Exhaust pipe: length 3m up to 8 m use pipe Ø 70 mm

Exhaust pipe: length longer than 8 m use pipe Ø 100 mm

Generally avoid using an exhaust pipe longer than 3 m. If the exhaust pipe needs to be any longer, please consider an alternative location for your central vacuum cleaner.

All parts and accessories for the installation are located inside the dirt container. Open the fastenings and remove all needed parts.

5 – Year Guarantee

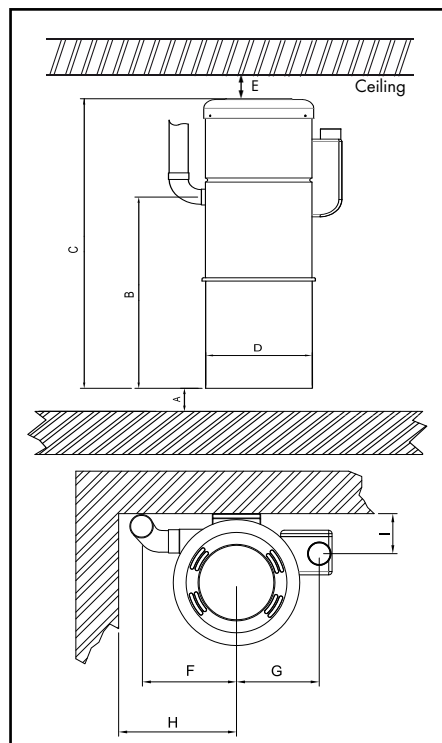
A 5 year guarantee comes with this central vacuum cleaner.

The guarantee is valid from the date on which the invoice is issued.

During the guarantee period, faulty central vacuum cleaners may be sent back free of charge. The address can be found on the guarantee registration card. In addition, we also require the sales slip and a completed guarantee registration card. You will then receive a new or repaired central vacuum cleaner. The guarantee only covers faults in materials and manufacture. Excluded are normal wear and tear, damages due to incorrect use, and effects of damp and other external influences or to the intervention of third parties.

After the guarantee has expired, repairs carried out or repairs not covered by the guarantee are invoiced to you.

We are happy to answer any questions you may have. You will find our service number located on the model plate of your central vacuum cleaner.



	One-motor version	Two-motor version
A	at least 8 cm	at least 8 cm
B	66 cm	69 cm
C	100.5 cm	113.5 cm
D	28.7 cm	35.7 cm
E	at least 20 cm	at least 20 cm
F	25.5 cm	29.5 cm
G	20 cm	23 cm
H	32 cm	36 cm
I	10 cm	12 cm

Please disconnect all power to the central vacuum cleaner before cleaning the unit or attempting any care and maintenance work.

Problem	Possible cause	Help aid
Filter-/ Dirt container symbol will not turn off. (IntelligentSystem® only)	Maintenance steps were not correctly followed	Empty dirt container as shown on page 11 Clean filter as shown on page 13
	Reset-button was not pressed	Please press the reset button on the appliance down for 5 seconds, after following maintenance steps.
Maintenance symbol is on (IntelligentSystem® only)	Carbon brushes are worn off, technical problem with the appliance.	Please notify a Service-technician!
Blinking maintenance symbol (IntelligentSystem® only)	Motor is close to overheating	The motor will shut itself off automatically, please wait until the maintenance symbol has stopped blinking before using the appliance.

Please examine the central vacuum cleaner after it is unpacked and look for any external damage that may have occurred during transport. If you notice any damage please contact us on our service number located on your central vacuum cleaner. Let us know the extent of damage, date of purchase, and serial number. You will find the serial number on the model plate on the side of the central vacuum cleaner or on the test certificate on page 19 under Technical Data.

For the wall mount please use the enclosed drilling template. The wall mount should be at least 1 m to 1.4 m above the ground.

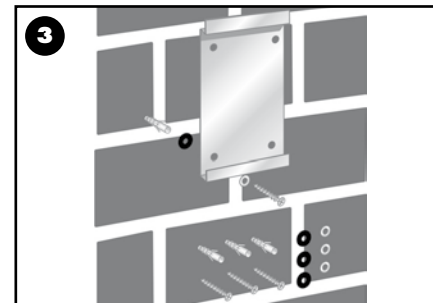
INSTALLATION



1. Place template at desired height on the wall. Mark in drill holes onto the wall.



2. Drill all four holes with a 6 mm drill bit. Drill holes deep enough so that the anchors (when inserted) are flush with the wall.



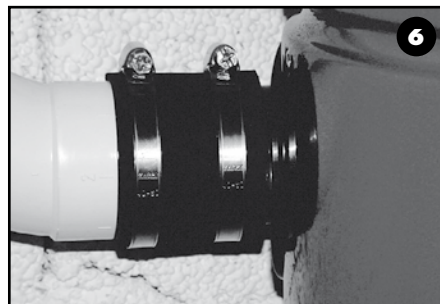
3. In the material bag you will find a seal for the wall mount, screws, and washers you need for installing the wall mount. The seal must be placed between the mount and the wall. Make sure when fastening the wall mount that the writing "TOP" is at the top.



4. Hang the brackets on the back of the central vacuum cleaner over the wall mount to hang up the unit.



5. The air extractor pipe is in the upper right hand corner. Push the flexible high performance sound muffler over the pipe stub and secure it with a hose clamp. Bend the muffler so that you can connect it to your exhaust air outlet pipe, fasten it also with a hose clamp. Then attach exhaust vent cover on the exterior of the house.



6. Place rubber sleeve over the suction pipe located on the lower left side of the central vacuum cleaner. Use the last 2 hose clamps to connect the suction pipe from the unit to the installed suction pipe and tighten the screws hand tight.



7. Connect the 12/24 V control line from the vacuum line to the 24 V control line of the central vacuum cleaner. Plug in the 230 V cable into the insulated ground receptacle. Now the central vacuum cleaner can be operated properly.

Please disconnect all power to the central vacuum cleaner before cleaning the unit or attempting any care and maintenance work.

Problem	Possible cause	Help aid
Weak suction	Dirt container full	Empty dirt container (page 11)
	Membrane filter blocked	Clean filter (page 13)
	Hose blocked	Loosen up blocked area by squeezing gently on the hose. Turn the central vacuum cleaner on for a few moments and the dirt will be sucked away. Repeat several times if necessary.
	Suction pipe blocked	Clean and free-up the suction pipe with a hose cleaning coil. If necessary notify customer service.
Central vacuum cleaner will not turn on.	Loose seal between housing and dirt container	Check the seal on the housing and clean it. Also check sealing ridge on dirt container and clean it. Re-attach dirt container again. If seal is damaged, notify customer service.
	Electric plug not in socket	Insert plug into socket
Central vacuum cleaner will not turn on.	Main fuse has blown	Change fuse. If it blows again please notify customer service.
	Hose does not properly fit in hose socket	Plug in hose correctly
	Contacts in the inlet value are dirty	Clean contacts carefully



5. Set the filter to dry in a well-aired place and remove the dust bag.



6. After the filter has been dried completely, reinstall it. Push the filter onto the filter holder and tighten the wing nut hand tight.

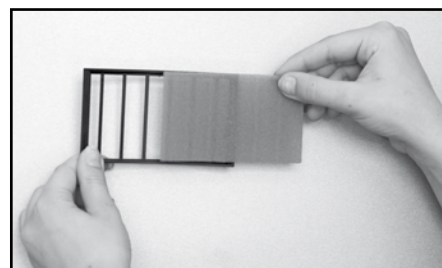


7. Re-attach the dirt container and make sure that the container is pulled tight under the housing. (as shown on p.12) The central vacuum cleaner is closed and can be turned back on.

Exchanging the carbon dust filter



Pull out the cover into an upwards direction by help of two fingers.



Insert the new filter and pull the cover all the way down.

STARTING THE APPLIANCE WITH THE STANDARD HOSE

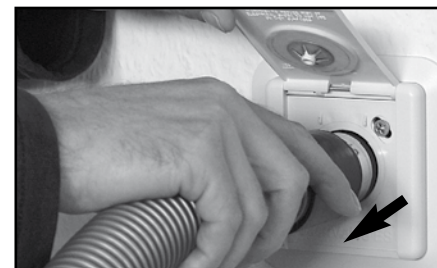
The central vacuum cleaner is ready for use after it has been plugged in.

Turning on



The appliance is switched on when a standard hose is inserted into an inlet valve.

Turning off



The appliance can be switched off by removing the hose from the inlet valve.

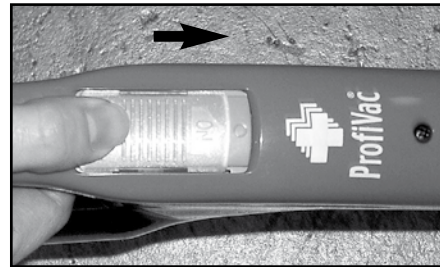
STARTING THE APPLIANCE WITH THE REMOTE CONTROL HOSE

The central vacuum cleaner is ready for use after it has been plugged in.

Turning on

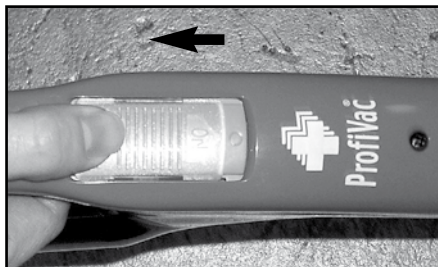


The appliance is turned on when the remote control hose is inserted into the inlet valve. Make sure the plastic flap is pointing up and that it fits into the groove of the inlet valve.



To use the remote control hose, the ON-OFF switch on the handle must be on the ON position.

Turning off



When using the remote control hose, the appliance is shut off when the ON-OFF switch on the handle is on the OFF position.



After the appliance is shut off from the handle you may disconnect the hose from the inlet valve.

Cleaning the filter

Your central vacuum cleaner is equipped with a highly effective membrane filter, with 1.37 m² filter surface, ensures that the outgoing air is absolutely clean. Through time it may occur that a layer of dust will form on the surface of the filter. You will then notice a decrease in suction power. If this occurs the filter has to be cleaned.

The membrane filter can be hand washed with cold water. Only when the filter is completely dry, can it be put back in the central vacuum cleaner. Damp filters become blocked quickly.

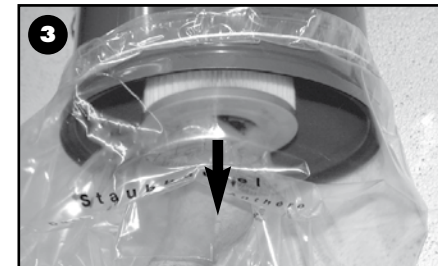
Please disconnect the power!



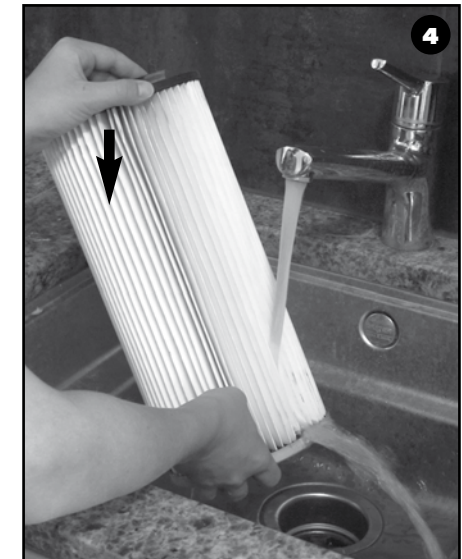
1. Remove dirt container as described on page 11 (section 1)



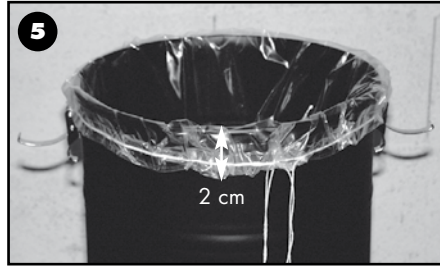
2. Pull an empty dust bag over the edge of the housing. Carefully draw the ties together to seal the dust bag against the housing so that no dust or dirt will escape.



3. Loosen the wing nut and pull the filter out of the filter holder. Then seal the dust bag.



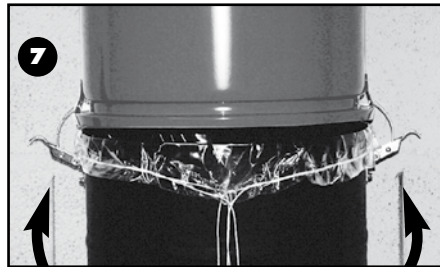
4. Open the dust bag again and pull it over a bucket of cold water with the filter inside. Protected from dust, place the filter into the water and rinse the dust off the filter.



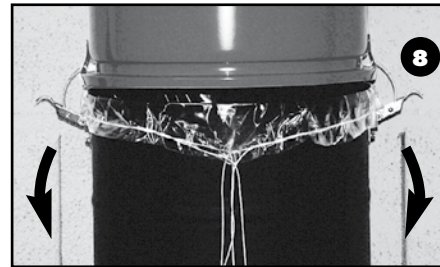
5. Place a new dust bag inside the dirt container. Pull the edges of the dust bag 2 cm over the outside of the dirt container. The ties should meet exactly in the middle. Pull the ties carefully until the outside edge of the dust bag begins to tighten against the dirt container.



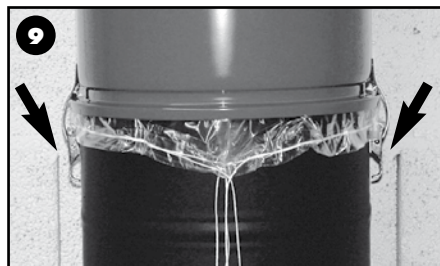
6. We have included one Volume Maximizer per dust bag. Insert the Volume Maximizer as shown above. Make sure that the dust bag is fitted tight against the dirt container.



7. Hook the right and left fasteners back into place.



8. Close the fasteners by pulling them down slowly. Make sure the dirt container is pulled tight under the housing so that it has a perfect seal.



9. The central vacuum cleaner is now closed and can be turned back on.

10. Plug the appliance back in. Then press the reset button down for 2 seconds. The appliance is ready for use.

STARTING THE APPLIANCE WITH THE IntelligentSystem® REMOTE CONTROL HOSE

The central vacuum cleaner is ready for use after the hose is inserted into the inlet valve.

Turning on



When inserting the IntelligentSystem® remote control hose make sure the plastic flap is pointing up and that it fits into the groove of the inlet valve.

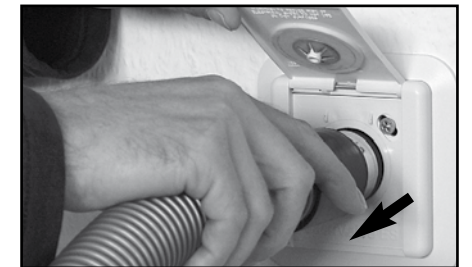


The central vacuum cleaner will only turn on through the ON-OFF switch located on the handle. The appliance will then run with 100 %.

Turning off



The central vacuum cleaner is shut off by using the ON-OFF switch located on the handle.



After the appliance is shut off from the handle you may disconnect the hose from the inlet valve.



The central vacuum cleaner is always on stand-by. The reset button on the appliance is to switch the "care and maintenance" symbols off after completing the care or maintenance. (see page 10) Symbols light up on the handle.

Care and Maintenance – VIP System



Yellow light – Dirt container symbol

The dirt container must be emptied. Please follow directions listed on page 11. After emptying out the dirt container and inserting a new dust bag, press down the reset button on the appliance for 2 seconds. The light on the handle will not be light up the next time you use the system.



Orange light – Filter symbol

The filter is dirty and should be washed out with water. Please follow directions listed on page 13. After the filter is cleaned and dry, re-insert the filter. Then press down the reset button on the appliance for 2 seconds and the light on the handle will not be light up the next time you use the system.



+

Dirt container + Filter symbol

Exchange carbon dust filter.



Red light – Maintenance symbol

The appliance needs maintenance work from a service technician or there might be an operational disturbance. Please notify a service technician.

AirControl

With the +/- switch on the VIP hose handle you can control the power options. You can chose between 30%, 60% and 100%. The power settings are listed in the table below:



100% power control



60% power control



30% power control

After the appliance is shut off with less than 100% it still converts to 100% for 4 seconds to remove all of the dirt and dust from the hose and pipe system.

For Care and Maintenance always disconnect the appliance.

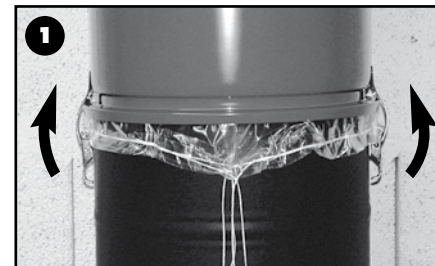
Only use a damp towel when cleaning the central vacuum.

The central vacuum cleaner is equipped with long life electric motors. All bearings have permanent lubrication. The carbon brushes have a service life of approx. 750 operating hours. According to experience, your central vacuum cleaner will operate up to 6 to 10 years with them. The motors then automatically turn off. After the brushes have been exchanged by authorised personnel the central vacuum cleaner can be put back to use.

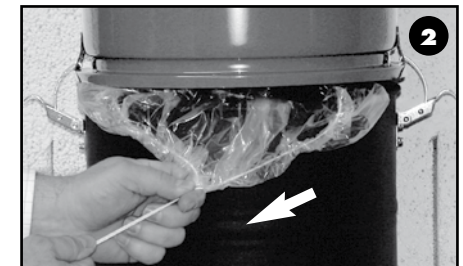
The dirt container of your central vacuum cleaner is equipped with a dust bag. The dust and dirt is collected in this bag and must be emptied regularly.

Changing the dust bag (not for „Classic“ models)

Please disconnect the power!



1. The dirt container is held shut by two clamp-down fasteners. Pull the fasteners up to release them. The dirt container will then only hang by the fasteners.



2. Between the container and the housing is a 2 cm wide gap. Slowly draw the ties to seal the dust bag.



3. You can pull down the dirt container and empty the dust bag without making a mess.



4. Dispose of your dust bag in the household garbage container.